

Cummins Southern Plains, LLC Consumer & Commercial Power Generation Training Program January - December 2012



Company Information

Cummins Southern Plains, LLC (CSPL) is one of the largest distributors of Cummins engines in the world. We are also an authorized distributor for ZF Industries. CSPL serves a diverse customer base throughout Texas and Oklahoma. Our power generation division is one of the leading Cummins Power Generation equipment and Onan generator suppliers in the industry.

Our business operations include wholesale parts distribution, retail parts sales, engine and power generation equipment sales, and maintenance and repair of diesel and alternative fueled engines, power generation equipment, transmissions and other related products.

CSPL is a factory authorized technical product training center for Cummins and Cummins Power Generation. Corporate Training Programs are available for authorized dealers and customers.

Our primary focus is to prepare our network on the Cummins, Cummins Power Generation and Cummins Onan product lines. Training now includes hands-on training which is product specific. All product training will consist of a computer based prerequisite either through use of the Virtual College Libraries or Power Gen University site. The technician will attend a classroom type course and conclude his/her training with an exam to measure application skills and comprehension.

CSPL's training staff is dedicated to provide excellence, quality and consistence in our training approach to help you excel in the technical aspects of your job. A vast amount of information pertaining to training may be found on the CSPL website at www.cummins-sp.com.

Our Mission

Provide technicians with the skills necessary to create customer confidence through dependable performance. Design, develop and deliver exceptional training using state of the art technology, equipment and education practices.

Our Vision

Proactively plan, develop, and provide superior training and technician development programs using blended training methods, state of the art classroom, web-based, demonstrations, and hands-on training.

Safety

CSPL is committed to providing every employee, dealer and customer with a safe workplace and training environment. As a CSPL employee, dealer or customer, you have a duty to comply with all safety rules and regulations. Our policy can be found at www.cummins-sp.com.

While visiting our facilities, please be especially aware of hazards that may result in injury. Also, be extra cautious around opportunities for spills and exposure to hazardous materials. In case of an emergency, your host will advise you of proper actions.

Course Registration and Cancellation

Registration

Class registrations are on a first-come, first-serve basis. A Course Enrollment form must be submitted to register. The form can be accessed at <http://www.cummins-sp.com/training/enrollment.htm>.

There are two ways to register: e-mail or fax.

1. Email: Kristi.D.Howard@cummins.com and/or cspl@cummins-sp.com.
2. Fax: Print and complete the registration form and fax to (817) 640-6914.

Invoicing will be done at the time of registration and a confirmation letter will then be sent via e-mail or fax.

Customer Training Classes

At CSPL we understand that some of our customers require more specialized training to better suit their training needs. We are pleased to offer customized training classes that can be modified to suit your training needs. All such requests for customized training should be forwarded to Kristi Howard. A Customized Training Request form must be completed and emailed to Kristi Howard at Kristi.D.Howard@cummins.com. The form can be accessed at <http://www.cummins-sp.com/training/>.

Please allow a four to six month lead time for customized private training. For scheduling information, please contact the Training Center (817) 640-6915.

Cancellations

Cancellations must be received at least five (5) business days prior to class start date in order to avoid a \$200 cancellation fee. If for any reason the training class is canceled, students may apply the tuition toward future training classes, or request a refund.

Course Fees/Payment Procedures

Class fees are shown under the program descriptions. Invoicing will be done at the time of registration. Prior credit approval is necessary for all company purchase orders. Company checks, Visa, MasterCard, American Express and cash are acceptable forms of payment. Checks must be made payable to:

Cummins Southern Plains, LLC
Attn: Training Center
600 North Watson Road
Arlington, TX 76011

Payment of class is required at registration.

General Information

Class Times

Classes are held from 8:00am to 5:00pm each day with one hour for lunch. If you need to meet special flight times on the last day of a scheduled class, please coordinate with the instructor on the first day of class.

Lodging, Meals and Transportation

Students are responsible for their lodging, meals and transportation. A list of hotels that offer our students a discounted rate may be found on the CSPL website (<http://www.cummins-sp.com/training/hotels.htm>). Each student is responsible for their own transportation to and from the training center, hotels and airports. Some hotels offer free shuttle service to and from the airport including the Training Center.

Parking

Student parking is provided. Please park in appropriate areas to avoid being towed.

Dress Code

CSPL personnel are required to wear appropriate work clothes and safety shoes. Dealer personnel & customers are encouraged to dress in jeans or Company uniforms. Shorts, sandals and sleeveless shirts are not considered appropriate attire. Earrings, piercing jewelry and chains are not permitted due to safety issues. Personal protective equipment (for example - steel toe shoes, safety glasses, etc) in accordance with local requirements and the requirements of the Cummins Safety System will be worn by students when working on engines during exercises and hands on qualification.

Accessing the Smart Program Guide

Every technician has a unique training path and may only need to complete certain Virtual College courses to satisfy specific certification requirements. Access to these requirements may be obtained by utilizing their individual Smart Program Guide. In order to view the Smart Program Guide, the technician must have access to QuickServe Online (QSOL). Once the technician logs in to QSOL, he/she may access the Smart Program Guide by following the steps below:

- Select *Training*
- Select *Service Training*
- Select *Technician*
- Select *Get A Smart Program Guide*
- Select the appropriate market (*Automotive, Non Engine Products, Industrial, Marine or Power Generation*)
- Click on the desired certification
- Click *Print* to print the page

Prerequisites must be complete one week prior to a class start date or the student will not be able to attend the course.

If the technician does not have a Promotion ID, please e-mail the technicians first and last name along with your Cummins dealer code to Kristi Howard at Kristi.D.Howard@Cummins.com. QSOL access will also be established.

Uploading Virtual College Scores

How to upload your virtual college training score

1. **Virtual College upload** – when you finish your cd-rom training, you can upload your training results yourself, click on the link then it will bring you to next slide, tell you how to find the file and upload it



Accessing Cummins Learning Center

Cummins Learning Center is a web-based Learning Management System (LMS) which gives us the capability to provide Cummins Power Generation technician training globally, 24 hours a day, seven days a week.

To gain access to Cummins Learning Center, you must be associated with a Dealer in QuickServe Online. You can request a log in by emailing Kristi Howard at Kristi.D.Howard@Cummins.com or learning@cummins.com. You must have a ProMotion ID number and a dealer number. Once all required information is received, an account will be created to track training completed.

To login, enter your QuickServe Online user ID and password into the QSOL website. Under the Training link on the left, a link for Cummins Learning Center should be available. A new window will open. Click on Sign In. This should take you to your Cummins Learning Center Home page.

Completing Learning Activities

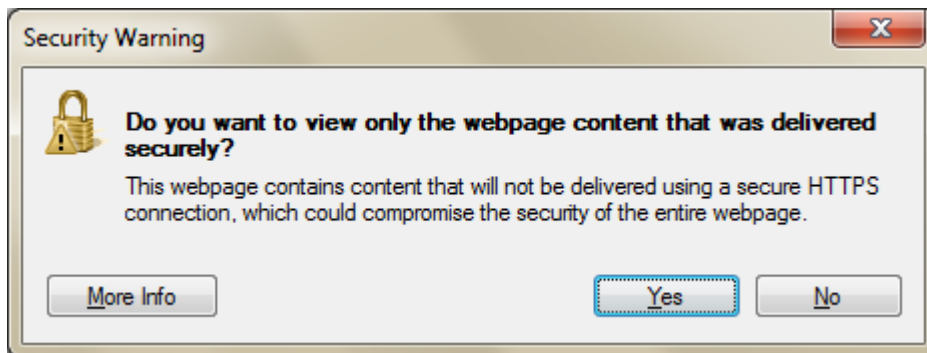
Once you've logged in to Cummins Learning Center, from the Home Page you should be able to register for online classes. On the right side, under knowledge center, enter the entire course number.

For example:

CMT0166 – Fundamentals of Power Generation

You would need to enter CMT0166 into the search box in order to receive the correct list of courses to complete.

The desired course opens and you will click on the Launch link. Be sure your pop-up blocker is turned off to ALLOW pop-ups. When the Security Warning opens, answer **NO** to allow all of the webpage content to be delivered.



2012 Training Schedule

Dates	Days	Class ID	Class Name	Fee	Location
February					
21-24	4	2007-08/16Q	Commercial RV and Gas Skills	\$900	Arlington
April					
9-13	5	2007-10/18Q & 2009-26Q	Commercial Mobile and RV Diesel Skills	\$1,125	Arlington
June					
25-29	5	2007-12/14Q	Onan Marine	\$1,125	OKC

Consumer and Commercial Power Generation

2007-08/16Q

Commercial Mobile and RV Gas Skills

This course includes familiarization of Commercial Mobile/RV Gensets, MicroLite, Micro Quite, Marquis, Marquis Gold, Marquis Platinum and Equinox. The course focuses on basic theory, troubleshooting and repair, operation, and periodic maintenance. Class will include a practical assessment for qualification.

Prerequisites: Basic working knowledge of AC/DC electrical theory and fundamentals.

Basic knowledge of gasoline and LP, (Liquid Petroleum) maintenance, troubleshooting and repair.

Completion of the following Cummins Learning Center basic courses:

CST0584 Basic Electrical

CST0585 Basic Power Generation

CST0586 Basic Mechanical (Gas & Diesel)

CST0587 RV Basic Installation

CST0685 RV & Commercial Mobile QG (Single Cylinder, Gas & Propane)

CST0673 RV & Commercial Mobile QG (Two Cylinder, Gas & Propane)

CST6007 Advance Electrical

CST6022 Basic Commercial Mobile Installation

CST6029 InPower Onan

CST0122 RV Inverter/Charger

Class Size: 8

Days: 4

Cost: \$900

2007-10/18Q & 2009-26Q

Commercial Mobile and RV Diesel Skills (Part 1 of 2)

This course includes familiarization of Commercial Mobile and RV Gensets, Quiet Diesel, 3.2 RV QD and Equinox. The course focuses on basic theory, troubleshooting and repair, operation, and periodic maintenance. Class will include written and practical assessments for qualification.

Prerequisites: Basic working knowledge of AC/DC electrical theory and fundamentals. Basic knowledge of diesel maintenance, troubleshooting and repair.

Completion of the following Cummins Learning Center basic RV courses:

- CST0584 Basic Electrical
- CST0585 Basic Power Generation
- CST0586 Basic Mechanical (Gas & Diesel)
- CST0587 RV Basic Installation
- CST0122 RV Inverter/Charger
- CST0671 RV Quiet Diesel
- CST6007 Advance Electrical
- CST6022 Commercial Basic Installation
- CST6023 Commercial SD (Standard Diesel)
- CST6030 RV 3200 Quiet Diesel
- CST6029 InPower Onan

CST6111 Commercial Mobile 10kW HDKAW CMSD Familiarization (Course is not required but highly recommended. If course is completed, the technician will also receive credit 2009-42Q 20kW CSMD qualification).

Class Size: 8

Days: 5

Cost: \$1125

2009-28Q

Hybrid Quiet Diesel HQD (Part 2 of 2)

This course is designed to introduce technicians to the Hybrid Quiet Diesel Power System, HQD 810, 1215 and 1218. The technician will learn about the concepts and system logic of operations of the power unit, inverter and transfer switch. This course also includes operational, repair, periodic maintenance, installation and troubleshooting procedures of the HQD system.

Prerequisites: Completion of the RV Diesel Skills course (2007-10Q Part 1 of 2)
Completion of the following Cummins Learning Center
CST6018 RV Hybrid Quiet Diesel
CST6007 Advance Electrical

Class Size: 8

Days: 5

Cost: \$1125

2007-23Q

Commercial Mobile Hydraulic Generator

Course includes but not limited to the familiarization of Hydraulic Generator operations and PTO Pumps, Eaton and Saur Danfoss operations. The course focuses on electrical safety, basic installation, theory of operation, preventive maintenance, troubleshooting techniques and maintenance repair procedures. Class will include a practical and written assessment for qualification.

Prerequisites: Basic working knowledge of AC/DC electrical theory and fundamentals. Basic Hydraulic maintenance, troubleshooting and repair.

Completion of Cummins Learning Center courses:

- CST0584 Basic Electrical
- CST0585 Basic Power Generation
- CST0586 Basic Mechanical (Gas & Diesel)
- CST6007 Advance Electrical
- CST6022 Basic Commercial Mobile Installation
- CST6024 Commercial HG (Hydraulic Generator)
- CST6025 Commercial Protec PTO

Class Size: 8

Days: 3

Cost: \$675

2007-12/14Q

Onan Marine Generator Skills

Course includes but not limited to the familiarization of Marine Generator operations for Marine Belt Drive Gasoline Units (MGK), Diesel (MDK), Marine Direct Drive Diesel Units (MDD & MDK). The course focuses on electrical safety, basic installation, theory of operation, preventive maintenance, troubleshooting techniques using electrical schematics and wire diagrams and maintenance repair procedures that are unique to marine application. Class will include a practical assessment for qualification.

Prerequisites: Basic working knowledge of AC/DC electrical theory and fundamentals. Basic gasoline and diesel maintenance, troubleshooting and repair. The ability to read and interpret Onan electrical schematics and wiring diagrams.

Completion of Cummins Learning Center basic and advance courses:

- CST0584 Basic Electrical
- CST0585 Basic Power Generation
- CST0586 Basic Mechanical (Gas & Diesel)
- CST6001 Marine Basic Installation
- CST6007 Advance Electrical
- CST6029 InPower Onan
- CST6020 Marine Product Overview
- CST6002 Marine Belt Drive Gas (MGK)
- CST6003 Marine Belt Drive Diesel (MDK)
- CST6016 Marine Direct Drive Diesel (MDK)
- CST0949 PowerGen Marine Direct Drive Diesel (MDD)

Class Size: 8
\$1,125

Days: 5

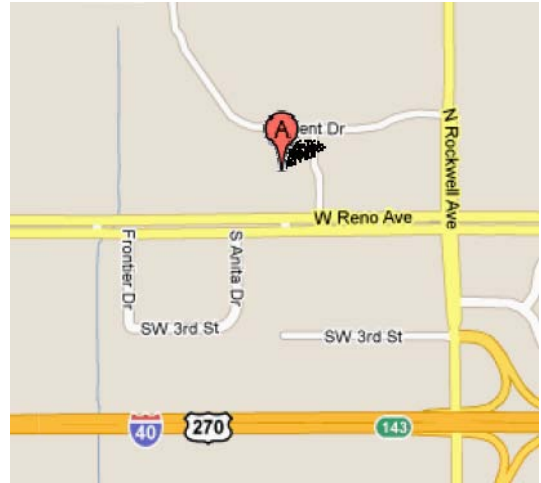
Cost:

Cummins Training Facilities



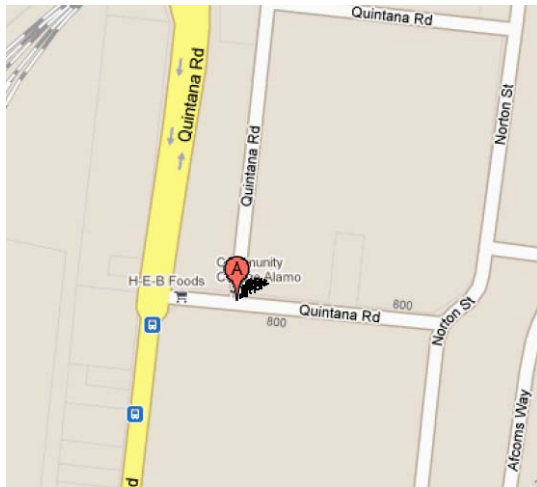
Arlington

Cummins Southern Plains, LLC
Training Center
620 North Watson Road
Arlington, TX 76011



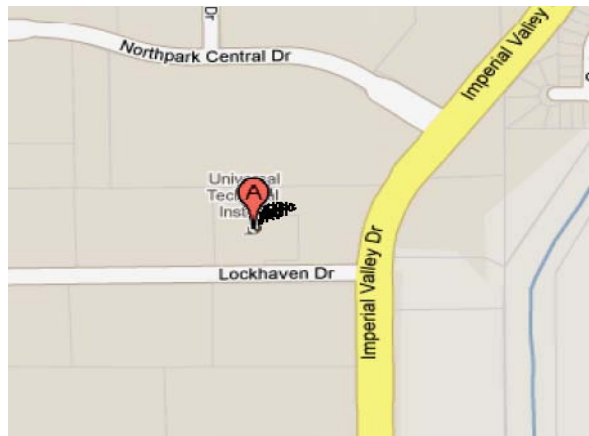
Oklahoma City

Francis Tuttle Technology Center
Diesel Technology Center
7301 West Reno Ave.
Oklahoma City, OK 73127



San Antonio

St. Phillips College – Southwest Campus
Diesel Technology Center
800 Quintana Road
San Antonio, Texas 78211



Houston

Universal Technical Institute
Diesel Technology Center
721 Lockhaven Drive
Houston, Texas 77073

Hotels Near Training Facilities

Arlington, TX

Cummins Southern Plains
Training Center

Holiday Inn

1311 N. Wet N Wild Way
Arlington, TX 76011
(817) 460-2500
www.hiarlingontx.com
\$69 per night plus tax

Hyatt Place–Arlington/Grand Prairie

1542 North Highway 360
Grand Prairie, TX 75050
(972) 988-6800
www.hyattplacedallasnortharlington.com
Corp #96366
\$69 per night plus tax

SpringHill Suites by Marriott

1975 East Lamar Blvd
Arlington, TX 76006
(817) 860-2737
www.marriott.com
\$69 per night plus tax

Hyatt Place – Dallas/Arlington

2380 E. Road to Six Flags Street
Arlington, Texas 76011
(817) 649-7676
www.dallasarlington.place.hyatt.com
Corp # CUMM
\$70 per night plus tax

Most hotels offer free shuttle services to and from the airport including the training center.

Please mention Cummins Southern Plains to obtain the Cummins discount rate.

Houston, TX

Universal Technical Institute

Hampton Inn & Suites

150 Wagon Point Drive
Houston, TX 77090
(281) 866-0404
www.hamptoninn.com
\$79 per night plus tax

Oklahoma City, OK

Francis Tuttle Technology Center

Homewood Suites by Hilton

6920 West Reno
Oklahoma City, OK 73127
(405) 789-3600
www.oklahomacitywest.homewoodsuites.com
\$79 per night plus tax

SpringHill Suites by Marriott

510 South MacArthur
Oklahoma City, OK 73128
(405) 604-0200
www.marriott.com
\$69 per night plus tax

San Antonio, TX

St. Philip's College

Staybridge Suites Sunset Station

123 Hoefgen
San Antonio, TX 78204
(210) 444-2700
<http://cumminsrates.com>
\$99 per night plus tax

Hyatt Place San Antonio Airport

7615 Jones Maltsberger Road
San Antonio, TX 78216
(210) 930-2333
<http://sanantonioairport.place.hyatt.com>
\$89 per night plus tax

Cummins Southern Plains Locations

Amarillo

5224 Interstate 40 East
Amarillo, TX 79103
Phone: 806-373-3793

Mesquite

2615 Big Town Blvd
Mesquite, TX 75150
Phone: 214-321-5555

Arlington (Corporate Office)

600 N Watson Rd
Arlington, TX 76011
Phone: 817-640-6801

Odessa

1210 South Grandview
Odessa, TX 79761
Phone: 432-332-9121

Dallas

3707 Irving Blvd
Dallas, TX 75247
Phone: 214-631-6400

Austin

1308 Chisholm Trail Rd. Ste. 112
Round Rock, TX 78681
Phone: 512-388-4296

Fort Worth

3250 North Freeway
Fort Worth, TX 76111
Phone: 817-624-2107

San Antonio

6226 Pan Am Expressway N.
San Antonio, TX 78218
Phone: 210-655-5420

Houston

7045 N Loop 610 East
Houston, TX 77028
Phone: 713-679-2220

Tulsa

16525 E Skelly Dr.
Tulsa, OK 74116
Phone: 918-234-3240

Oklahoma City

5800 West Reno
Oklahoma City, OK 73127
Phone: 405-946-4481

Cummins **Onan**



Visit us online at www.cummins-sp.com/training